



Please dispose of packaging for the product in a responsible manner. It is suitable for recycling. Help to protect the environment, take the packaging to the local amenity tip and place into the appropriate recycling bin.



Never dispose of electrical equipment or batteries in with your domestic waste. If your supplier offers a disposal facility please use it or alternatively use a recognised re-cycling agent. This will allow the recycling of raw materials and help protect the environment.



SIP INDUSTRIAL

machinery specialists since 1968

Bench Grinder



07546, 07557 & 07576

**FOR HELP OR ADVICE ON THIS PRODUCT PLEASE CONTACT YOUR DISTRIBUTOR,
OR SIP DIRECTLY ON:
TEL: 01 509500400
EMAIL: sales@sip-group.com or technical@sip-group.com
www.sip-group.com**

Ref: 120614

Please read and fully understand the instructions in this manual before operation. Keep this manual safe for future reference.

DECLARATION OF CONFORMITY

Declaration of Conformity

We

SIP (Industrial Products) Ltd
Gelders Hall Road
Shepshed
Loughborough
Leicestershire
LE12 9NH
England

As the manufacturer's authorised representative within the EC
declare that the

6" Trade Bench Grinder - SIP Part No. 07546
8" Trade Bench Grinder - SIP Part No. 07557
8"x 6" Trade Wet/Dry Bench Grinder - SIP Part No. 07576

Conforms to the requirements of the following directive(s), as indicated.

2006/42/EC	Machinery Directive
2004/108/EC	EMC Directive
2002/95/EC	RoHS Directive

And the relevant harmonised standard(s), including,

EN 55014-1+A1:2009
EN 55014-2+A2:2008
EN 61000-3-2+A2:2009
EN 61000-3-3:2008

Signed: 

Mr P. Ippaso - Managing Director - SIP (Industrial Products) Ltd
Date: 16/04/2012.



Page No.	Description
4.	Safety Symbols Used Throughout This Manual
4.	Safety Instructions
8.	Technical Specifications
9.	Electrical Connection
10.	Guarantee
10.	Contents and Accessories
11.	Getting To Know Your Grinder
12.	Assembly Instructions
14.	Operating Instructions
16.	Maintenance
19.	Exploded Drawing - 07546
20.	Parts List - 07546
21.	Exploded Drawing - 07557
22.	Parts List - 07557
23.	Exploded Drawing - 07576
24.	Parts List - 07576
31.	Declaration of Conformity

SAFETY SYMBOLS USED THROUGHOUT THIS MANUAL



Danger / Caution: Indicates risk of personal injury and/or the possibility of damage.



Warning: Risk of electrical injury or damage!



Note: Supplementary information.

SAFETY INSTRUCTIONS



IMPORTANT: Please read the following instructions carefully, **failure to do so could lead to serious personal injury and / or damage to the bench grinder.**

When using electric tools / machines, basic safety precautions should always be followed to reduce the risk of fire, electric shock and personal injury.

Read all these instructions before operating the grinder and save this user manual for future reference.

SIP recommends that this grinder should **not** be modified or used for any application other than that for which it was designed.

It was designed to be bench mounted, for driving abrasive wheels for the purpose of sharpening cutting tools such as chisels or drill bits. Alternatively it may be used to roughly shape metal prior to welding or fitting etc.

If you are unsure of its relative applications do not hesitate to contact us and we will be more than happy to advise you.

KNOW YOUR POWER TOOL: Read and understand the owner's manual and labels affixed to the grinder. Learn its applications and limitations, as well as the potential hazards specific to it.

KEEP WORK AREA CLEAN AND WELL LIT: Cluttered work benches and dark areas invite accidents. Floors must not be slippery due to oil, water or metal dust etc.

DO NOT USE THE TOOL IN DANGEROUS ENVIRONMENTS: Do not use power tools in damp or wet locations, or expose them to rain. Provide adequate space surrounding the work area. Do not use in environments with a potentially explosive atmosphere.

KEEP CHILDREN AND UNTRAINED PERSONNEL AWAY FROM THE WORK AREA: All visitors should be kept at a safe distance from the work area.

STORE TOOLS SAFELY WHEN THEY ARE NOT IN USE: All tools should be stored in a dry,

NOTES

PARTS LIST 07576

Ref. No.	Description	Slp Part No.	Ref. No.	Description	Slp Part No.
1.	Disc retaining nut	WK05-00004	28.	Rotor	WK05-00084
2.	Disc flange	WK05-00005	29.	Bolt	WK05-00031
3.	Outer wheel flange	WK05-00068	30.	Stator	WK05-00085
4.	Wheel (wet 8")	WK05-00069	31.	Mains lead	WK05-00038
5.	Inner wheel flange	WK05-00070	32.	Mains lead clamp	WK05-00039
6.	Bearing	WK05-00071	33.	Mains lead adaptor	WK05-00086
7.	Screw	WK05-00072	34.	Screw	WK05-00087
8.	Washer	WK05-00073	35.	Centre motor cover	WK05-00040
9.	Washer	WK05-00074	36.	On/Off switch	WK05-00049
10.	Water trough	WK05-00075	37.	Switch plate	WK05-00047
11.	Drain plug	WK05-00076	38.	Cable protector	WK05-00088
12.	Screw	WK05-00077	39.	Label	WK05-00089
13.	Cover	WK05-00078	40.	Thumbscrew	WK05-00013
14.	Screw	WK05-00054	41.	Washer	WK05-00090
15.	Washer	WK05-00024	42.	Washer	WK05-00091
16.	Washer	WK05-00025	43.	Right tool rest	WK05-00042
17.	Shaft	WK05-00079	44.	Inner wheel cover	WK05-00043
18.	Pin	WK05-00080	45.	Bolt	WK05-00011
19.	Worm wheel	WK05-00081	47.	Coarse grinding wheel	WK05-00007
20.	Bearing	WK05-00082	47.	Fine grinding wheel	WK05-00008
21.	Worm wheel shaft	WK05-00083	48.	Centre wheel cover	WK05-00009
22.	Rubber foot	WK05-00052	49.	Outer wheel cover	WK05-00003
23.	Base plate	WK05-00051	50.	Screw	WK05-00023
24.	Left motor cover	WK05-00030	51.	Eye shield	WK05-00022
25.	Capacitor 6mf	WK05-00050	52.	Spark arrestor / eye shield bracket	WK05-00019
26.	Nut	WK05-00026	53.	Worm gear case	WK05-00092
27.	Bearing	WK05-00035			

SAFETY INSTRUCTIONS...cont

locked cupboard wherever possible and out of the reach of children.

WEAR THE CORRECT CLOTHING: Do not wear loose clothing, neckties, rings, bracelets, or other jewellery, which may get caught in moving parts. Non-slip footwear is recommended. Wear protective hair covering to contain long hair. Roll long sleeves up above the elbow.

USE SAFETY GOGGLES AND EAR PROTECTION ETC: Wear CE approved safety goggles at all times, normal spectacles only have impact resistant lenses, they are **NOT** safety glasses. A face or dust mask should be worn if the operation is dusty and ear protectors (plugs or muffs) should be worn, particularly during extended periods of operation.

PROTECT YOURSELF FROM ELECTRIC SHOCK: When working with power tools, avoid contact with any earthed items (e.g. pipes, radiators, hobs and refrigerators, etc.). It is advisable wherever possible to use an RCD (residual current device) at the mains socket or supply board.

STAY ALERT: Always watch what you are doing and use common sense. Do not operate a grinder when you are tired or under the influence of alcohol or drugs.

DISCONNECT THE TOOL FROM THE MAINS SUPPLY: When not in use, before servicing and when changing accessories such as wheels.

AVOID UNINTENTIONAL STARTING: Make sure the switch is in the **OFF** position before connecting the grinder to the mains supply.

NEVER LEAVE THE TOOL RUNNING / CONNECTED WHILST UNATTENDED: Turn off the tool and disconnect it from the mains supply between jobs. Do not leave the machine until it comes to a complete stop.

DO NOT ABUSE THE MAINS LEAD: Never carry the grinder by the mains lead or pull it to remove the plug from the mains socket. Keep the mains lead away from heat, oil and sharp edges. If the mains lead is damaged, it must be replaced by the manufacturer or its service agent or a similarly qualified person in order to avoid unwanted hazards.

CHECK FOR DAMAGED PARTS: Before every use of the grinder, a guard or other part that is damaged should be carefully checked to determine that it will operate correctly and perform its intended function. Check for alignment of moving parts, free running of moving parts, breakage of parts, and any other conditions that may affect its operation. A guard or other part that is damaged should be correctly repaired or replaced by an authorised service centre unless otherwise indicated in this instruction manual. Have defective switches replaced by an authorised service agent. Do not use the tool if the switch does not turn it on and off.

KEEP ALL GUARDS IN PLACE: And in full working order.

MAINTAIN TOOLS WITH CARE: Keep tools sharp and clean for the best and safest performance. Follow instructions for lubricating and changing accessories. All extension cables must be checked at regular intervals and replaced if damaged.

USE ONLY RECOMMENDED ACCESSORIES: Consult this user manual for recommended accessories. Follow the instructions that accompany the accessories. The use of improper accessories may cause hazards and will invalidate any warranty you may have.

SAFETY INSTRUCTIONS...cont

REMOVE ADJUSTING KEYS AND WRENCHES: Form a habit of checking to see that keys and adjusting wrenches are removed from the tool before every use.

DO NOT OVERREACH: Keep proper footing and balance at all times.

USE THE RIGHT TOOL: Do not use the tool or attachment to do a job for which it was not designed.

DO NOT FORCE THE TOOL: It will do the job better and more safely at the rate which it was designed.

DO NOT OPERATE POWER TOOLS IN EXPLOSIVE ATMOSPHERES: Do not use the grinder in the presence of flammable liquids, gases, dust or other combustible sources. Grinding will create sparks which can ignite the dust or fumes.

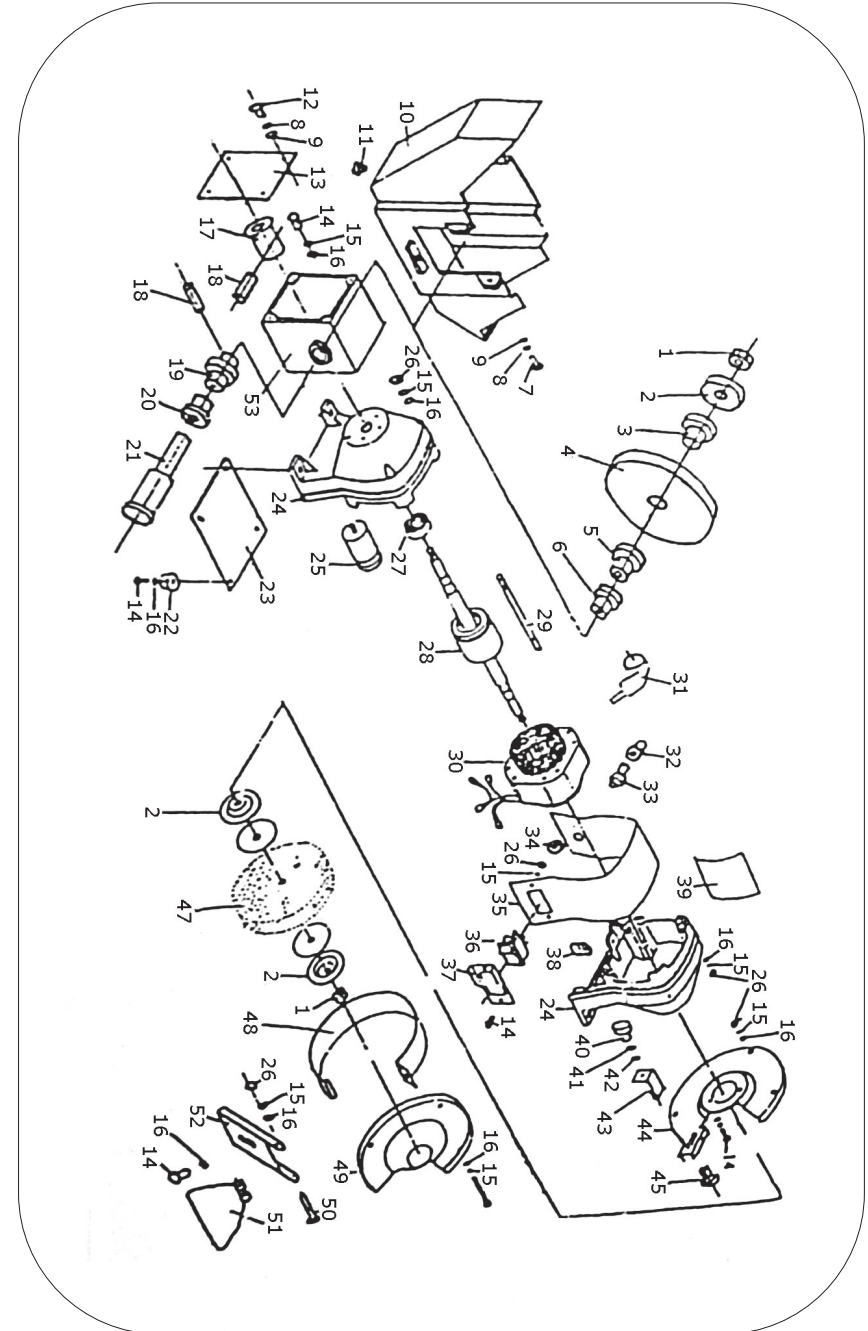
DO NOT EXPOSE THE TOOL TO RAIN OR USE IT IN WET CONDITIONS: Water entering the grinder will greatly increase the risk of electric shock.

KEEP THE MAINS LEAD WELL AWAY FROM THE CUTTING WHEEL: The mains lead should be secured away from the cutting wheel at all times to avoid the risk of electric shocks. Replace any damaged or tired looking leads immediately with the correct rated cable.

ALWAYS CHECK THE WHEEL: Always inspect the wheel for cracks and general condition before use as they could shatter at high speed causing injury to the operator and fellow work mates. If using an old wheel ensure that it hasn't gone soft as the bond that holds it together can go off over time.

- Use only the wheel flanges and nuts specified for this tool.
- Before each use; Ensure that the wheel retaining nuts are fully secure.
- Ensure that the grinder is securely bolted to a stable surface so it will not move during operation.
- Ensure that all keys and wrenches are removed before operating the grinder.
- Ensure that the work-piece to be ground is clear of the grinding wheel before the switch is turned on.
- Before turning on the grinder, turn the wheel by hand to ensure nothing is catching, then turn the grinder on and let it run for a while; Watch for vibration or excessive wobble of the wheel that could indicate poor installation or a poorly balanced wheel. Adjust or replace as necessary.
- Allow the wheel to run up to full speed before grinding.
- Stop operation immediately if you notice, or suspect anything abnormal.
- Wait for the grinder to stop completely and remove the plug from the mains supply before servicing or adjusting the grinder.
- Be alert at all times, especially during repetitive, monotonous operations. Don't be lulled into a false sense of security. Grinding wheels are extremely unforgiving.
- Use of improper accessories such as wire wheels may cause damage to the grinder and surrounding area as well as increasing the risk of injury.
- Do not modify the grinder to do tasks other than those for which it was designed.

EXPLODED DRAWING 07576



PARTS LIST 07557

Ref. No.	Description	Sip Part No.	Ref. No.	Description	Sip Part No.
1.	Screw	WK05-00001	27.	Spring washer	WK05-00028
2.	Washer	WK05-00002	28.	Flat washer	WK05-00029
3.	Outer disc cover	WK05-00055	29.	Left motor cover	WK05-00061
4.	Disc retaining nut (left)	WK05-00004	30.	Main bolt	WK05-00031
5.	Disc flange	WK05-00056	31.	Washer	WK05-00032
6.	Disc retaining nut (right)	WK05-00006	32.	Spring washer	WK05-00033
7.	Coarse grinding wheel	WK05-00057	33.	Nut	WK05-00034
7.	Fine grinding wheel	WK05-00058	34.	Bearing	WK05-00035
8.	Centre disc cover	WK05-00059	35.	Rotor	WK05-00062
9.	Inner disc cover (left)	WK05-00060	36.	Stator	WK05-00063
10.	Bolt	WK05-00011	37.	Mains lead	WK05-00038
11.	Left tool rest	WK05-00012	38.	Cable gland	WK05-00039
12.	Thumb screw	WK05-00013	39.	Centre motor cover	WK05-00064
13.	Nut	WK05-00014	40.	Right motor cover	WK05-00065
14.	Spring washer	WK05-00015	41.	Right tool rest	WK05-00042
15.	Washer	WK05-00016	42.	Inner disc cover (right)	WK05-00066
16.	Screw	WK05-00017	44.	Spring & star washer	WK05-00044
17.	Washer	WK05-00018	45.	Earth screw	WK05-00045
18.	Spark arrestor / eye shield bracket	WK05-00019	46.	Nut	WK05-00046
19.	Washer	WK05-00020	49.	Switch plate	WK05-00047
20.	Nut	WK05-00021	51.	Screw	WK05-00048
21.	Eye shield	WK05-00022	52.	On/Off switch	WK05-00049
22.	Screw	WK05-00023	53.	Capacitor 6mf	WK05-00050
23.	Washer	WK05-00024	54.	Base plate	WK05-00051
24.	Washer	WK05-00025	55.	Rubber foot	WK05-00052
25.	Nut	WK05-00026	56.	Washer	WK05-00053
26.	Screw	WK05-00027	57.	Screw	WK05-00054

SAFETY INSTRUCTIONS...cont



When using the grinder always ensure the operator as well as those in the area wear eye protection.



Grinding produces particles which can become airborne and have the potential to be highly toxic; always wear a face mask when operating the grinder.



When using the grinder always ensure the operator as well as those in the area wear ear protection, particularly during periods of extended use.



Caution: The warnings and cautions mentioned in this user manual can not cover all possible conditions and situations that may occur. It must be understood by the operator that common sense and caution are factors which cannot be built into this product, but must be applied.

TECHNICAL SPECIFICATIONS

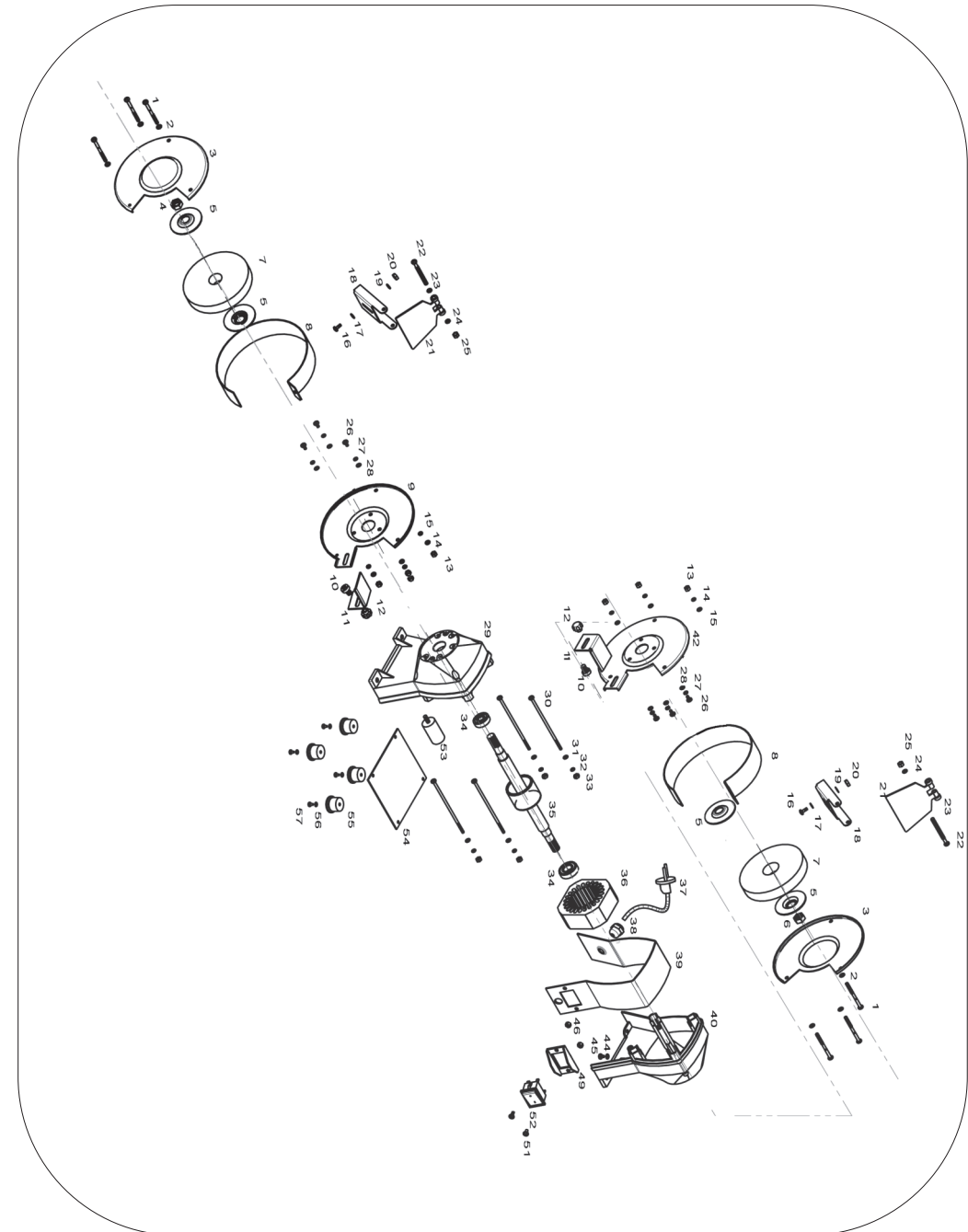
07546 & 07557

Part No.	07546	07557
Description	6" Bench Grinder	8" Bench Grinder
Input Voltage	230v 50Hz	230v 50Hz
Motor	250w	350w
Wheel Speed	3000rpm	3000rpm
Wheel Dimensions (mm)	Ø150 x 20 x 12.7 (bore)	Ø200 x 20 x 16 (bore)
Net Weight	6.92Kg	9.26Kg

07576

Part No.	07576
Description	6"x 8" Wet / Dry Grinder
Input Voltage	230v 50Hz
Motor	375w
Wheel Speed	Dry - 3000rpm Wet - 135rpm
Wheel Dimensions (mm)	Dry - Ø150 x 20 x 12.7 (bore) Wet - Ø200 x 40 x 20 (bore)
Net Weight	9.60Kg

EXPLODED DRAWING 07557



PARTS LIST 07546

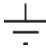
Ref. No.	Description	Slp Part No.	Ref. No.	Description	Slp Part No.
1.	Screw	WK05-00001	27.	Spring washer	WK05-00028
2.	Washer	WK05-00002	28.	Flat washer	WK05-00029
3.	Outer disc cover	WK05-00003	29.	Left motor cover	WK05-00030
4.	Disc retaining nut (left)	WK05-00004	30.	Main bolt	WK05-00031
5.	Disc flange	WK05-00005	31.	Washer	WK05-00032
6.	Disc retaining nut (right)	WK05-00006	32.	Spring washer	WK05-00033
7.	Coarse grinding wheel	WK05-00007	33.	Nut	WK05-00034
7.	Fine grinding wheel	WK05-00008	34.	Bearing	WK05-00035
8.	Centre disc cover	WK05-00009	35.	Rotor	WK05-00036
9.	Inner disc cover (left)	WK05-00010	36.	Stator	WK05-00037
10.	Bolt	WK05-00011	37.	Mains lead	WK05-00038
11.	Left tool rest	WK05-00012	38.	Cable gland	WK05-00039
12.	Thumb screw	WK05-00013	39.	Centre motor cover	WK05-00040
13.	Nut	WK05-00014	40.	Right motor cover	WK05-00041
14.	Spring washer	WK05-00015	41.	Right tool rest	WK05-00042
15.	Washer	WK05-00016	42.	Inner disc cover (right)	WK05-00043
16.	Screw	WK05-00017	44.	Spring & star washer	WK05-00044
17.	Washer	WK05-00018	45.	Earth screw	WK05-00045
18.	Spark arrestor / eye shield bracket	WK05-00019	46.	Nut	WK05-00046
19.	Washer	WK05-00020	49.	Switch plate	WK05-00047
20.	Nut	WK05-00021	51.	Screw	WK05-00048
21.	Eye shield	WK05-00022	52.	On/Off switch	WK05-00049
22.	Screw	WK05-00023	53.	Capacitor 6mf	WK05-00050
23.	Washer	WK05-00024	54.	Base plate	WK05-00051
24.	Washer	WK05-00025	55.	Rubber foot	WK05-00052
25.	Nut	WK05-00026	56.	Washer	WK05-00053
26.	Screw	WK05-00027	57.	Screw	WK05-00054

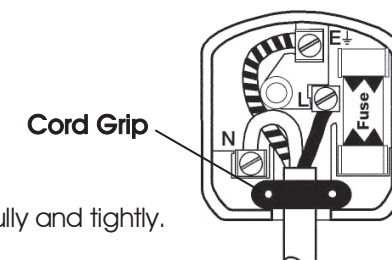
ELECTRICAL CONNECTION

This grinder is fitted with a standard UK type 230v ~ plug. Before using the grinder inspect the cable and plug to ensure that neither are damaged. If any damage is visible have the grinder inspected / repaired by a suitably qualified person. If it is necessary to replace the plug a heavy duty impact resistant plug would be preferable.

The wires for the plug are coloured in the following way:

Yellow / green	Earth
Blue	Neutral
Brown	Live

As the colours of the wires may not correspond with the markings in your plug, proceed as follows: The wire which is coloured blue, must be connected to the terminal marked with N or coloured black. The wire which is coloured brown, must be connected to the terminal, which is marked L or coloured red. The wire which is coloured yellow / green should be connected to the terminal which is coloured the same or marked. 



Always secure the wires in the plug terminal carefully and tightly. Secure the cable in the cord grip carefully.



Warning: Never connect live or neutral wires to the earth terminal of the plug. Only fit an approved plug with the correct rated fuse. If in doubt consult a qualified electrician.



Note: Always make sure the mains supply is of the correct voltage and the correct fuse protection is used. In the event of replacing the fuse always replace the fuse with the same value as the original.



Note: If an extension lead is required in order to reach the mains supply; ensure that this too is rated for the correct voltage and fuse rating.



Note: The cross section of the extension lead should be checked so that it is of sufficient size so as to reduce the chances of voltage drops.

GUARANTEE

These SIP Bench Grinders are covered by a 12 month parts and labour warranty covering failure due to manufacturers defects. This does not cover failure due to misuse or operating the grinders outside the scope of this manual - any claims deemed to be outside the scope of the warranty may be subject to charges including, but not limited to parts, labour and carriage costs. Consumable items such as grinding wheels are not covered by the warranty.

In the unlikely event of warranty claims, contact your distributor as soon as possible. Proof of purchase will be required before any warranty can be honoured.



Note: Proof of purchase will be required before any warranty can be honoured.

CONTENTS AND ACCESSORIES

07546 & 07557

- Bench Grinder c/w 2 x Grinding Wheels
- Spark Arrestor / Eye Shield Assembly x 2
- Tool Rest Assembly x 2
- Instruction Manual

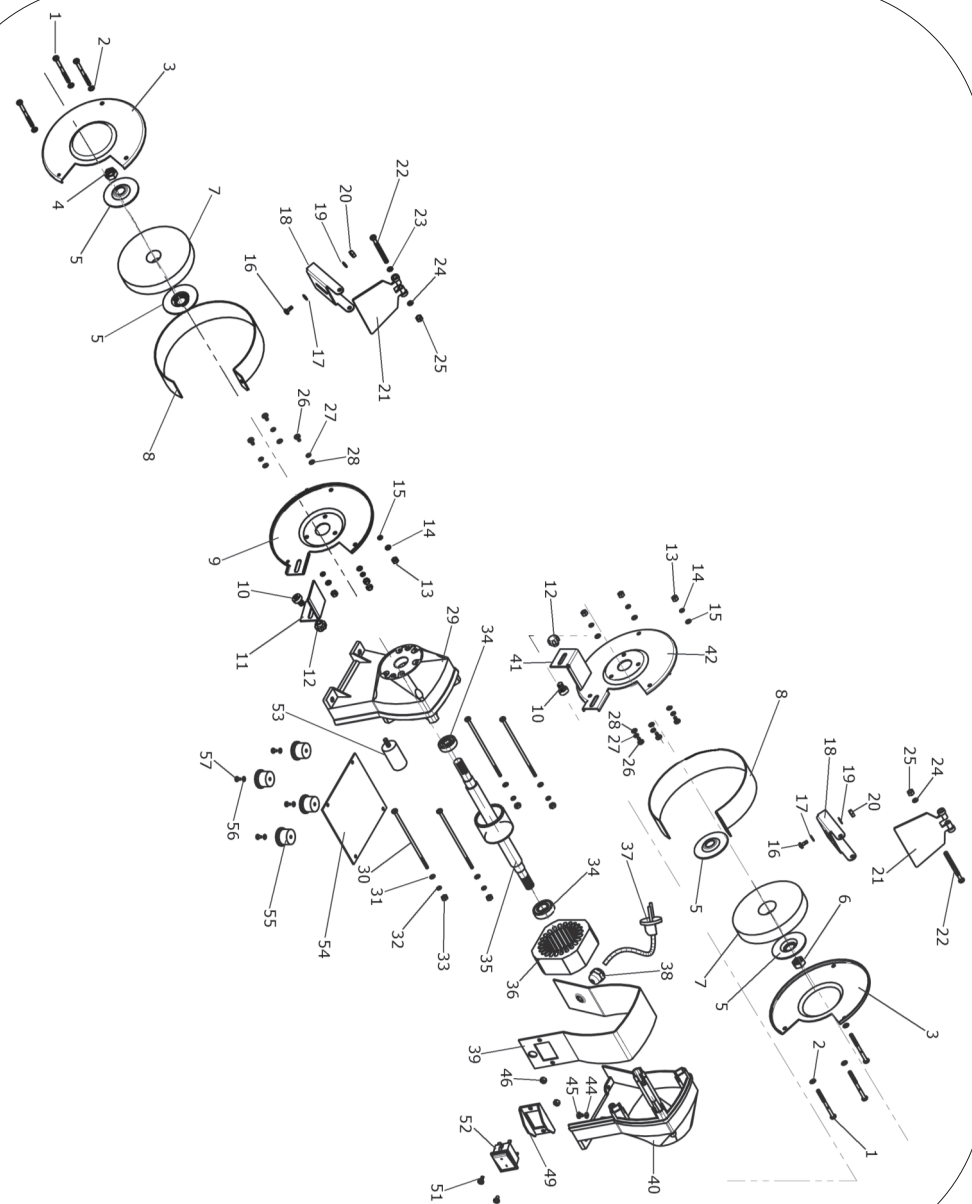
07576

- Bench Grinder c/w 2 x Grinding Wheels (1x wet & 1x Dry)
- Spark Arrestor / Eye Shield Assembly x 1
- Tool Rest Assembly x 1
- Instruction Manual



Note: If any parts are missing, contact your distributor for the missing parts to be replaced.

EXPLODED DRAWING 07546

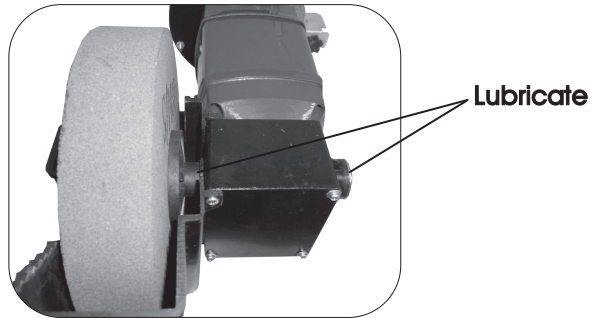


MAINTENANCE...cont

- Ensure that the shaft and flanges are clean and free from burrs etc.
- Refit the flanges and wheel etc.
- Refit the water carrier and secure in place by tightening the 3 screw previously removed.

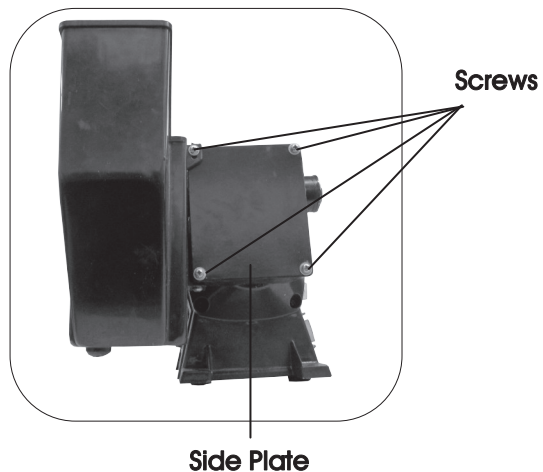
LUBRICATION

The shaft of the wet stone should be regularly lubricated with a few drops of oil in the locations as shown below.



Periodically, depending on the amount of use, the grease in the gearbox should be checked (07576 only).

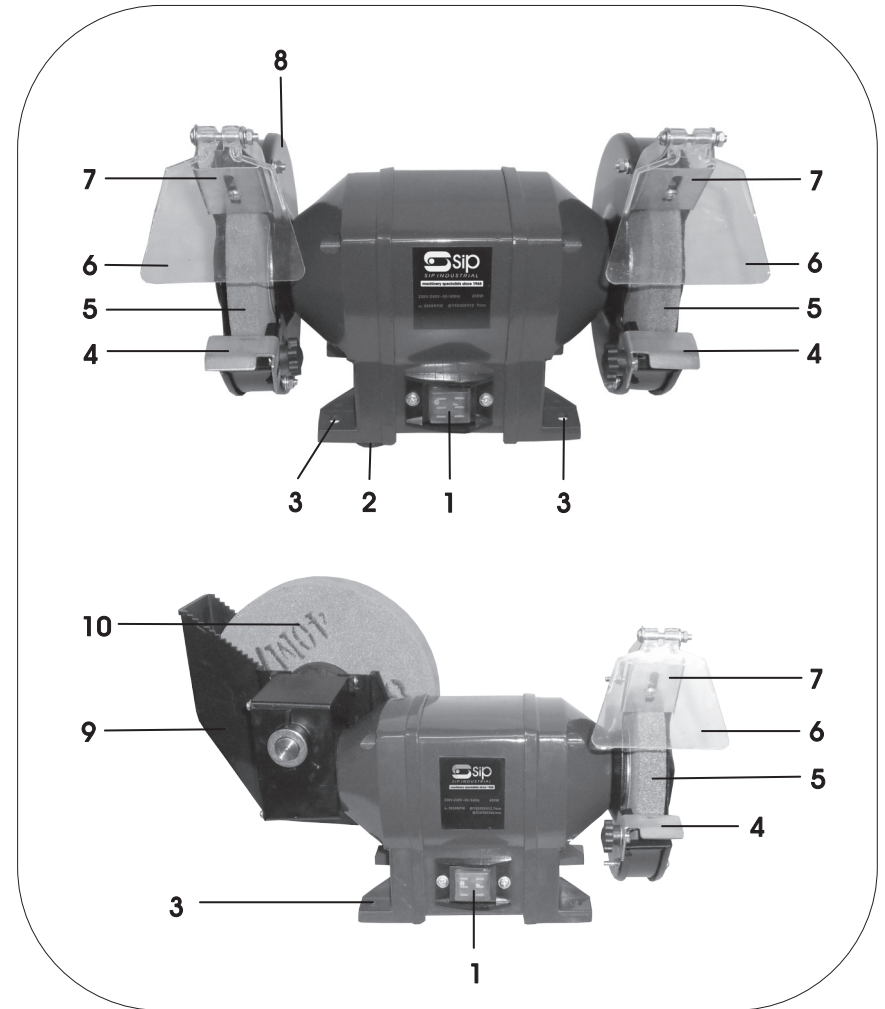
- Loosen and remove the 4 screws that hold the side plate of the gearbox and remove the plate (see below).
- Check and grease as required.
- Refit the side plate.



Side Plate

18

GETTING TO KNOW YOUR BENCH GRINDER



Ref. No.	Description	Ref. No.	Description
1.	On/Off Switch	6.	Eye Shield
2.	Rubber Foot	7.	Spark Arrestor
3.	Mounting Hole	8.	Guard
4.	Tool Rest	9.	Water Carrier
5.	Grinding Wheel (dry)	10.	Grinding Wheel (wet)

11

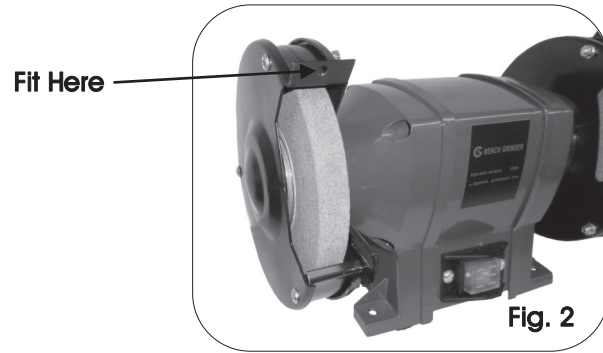
ASSEMBLY INSTRUCTIONS

FITTING THE SPARK ARRESTOR / EYE SHIELD

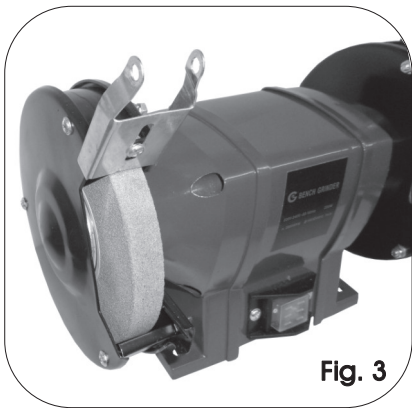
As well as holding the eye shield in place; The spark arrestor is designed to reduce the amount of sparks that are directed back towards the operator.

Locate the spark arrestor (Fig. 1).

The spark arrestor fits onto the main guard (Fig. 2).



Fit the spark arrestor and secure in place with the screw, washers and nut (Fig. 3)

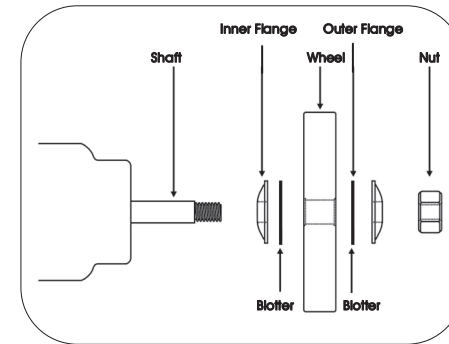


Note: The spark arrestor should be set close to the grinding wheel, without touching; turn the wheel by hand to ensure there is no contact.

Follow these instructions to fit the other spark arrestor to the opposite side (07546 & 07557 only).

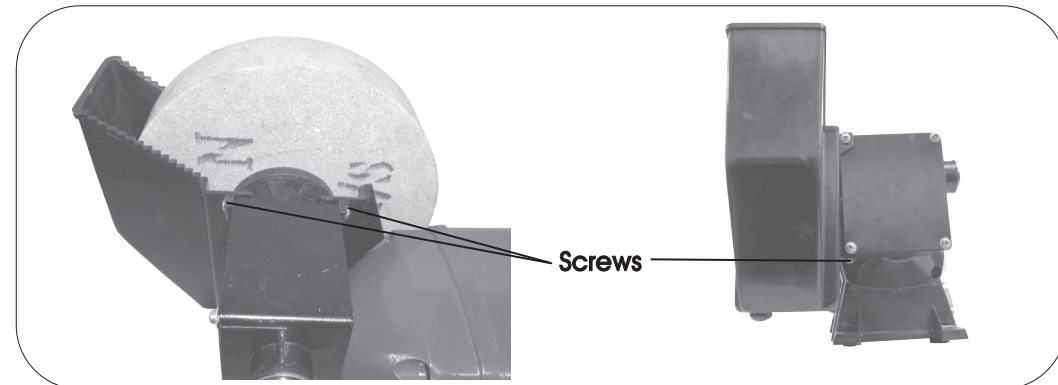
MAINTENANCE...cont

- Hold the grinding wheel, or the opposite one, with one hand and turn the retaining nut clockwise for the left hand wheel, and anti clockwise for the right hand wheel.
- Remove the nut, outer flange and the grinding wheel.
- Ensure that the shaft and flanges are clean and free from burrs etc.
- Refit the flanges and wheel etc. as shown below.
- Follow the instructions above, but in reverse to secure the new wheel and cover etc.



REPLACING THE GRINDING WHEEL (WET)

- Loosen and remove the screws that hold the water carrier in place; there are 3 screws, 2 either side of the gear box (see below, left) and one on the bottom of the gear box (below, right).



- Remove the water carrier.
- Loosen and remove the wheel retaining nut by turning it anti clockwise.
- Remove the nut, outer flange and the grinding wheel.

MAINTENANCE



Warning! Always ensure that the grinder is turned off and that the plug is disconnected from the mains supply before carrying out any adjustments, repairs or maintenance.

CLEANING AND ADJUSTMENTS

As the wheels wear, adjust the positions of the tool rests and spark arrestors; They should be set so that they are as close to the grinding wheel as possible, but without touching.

Regularly remove the wheel covers and clean out any dust and dirt.

The machine motor and bearings are sealed units and require no regular maintenance.

The eye shields should be cleaned regularly so that the operator has a clear view of the work-piece and grinding wheel. Mild soap and water should be used; never use solvents or similar products as they will damage the eye shield/s.

REPLACING THE GRINDING WHEELS (DRY)



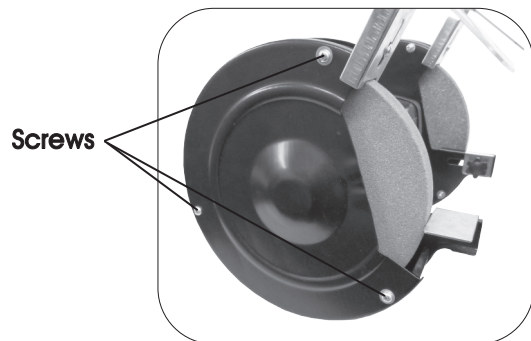
Warning! Always ensure that a 'blotter' (cardboard disc between the flange and the grinding wheel) is fitted either side of the grinding wheel.



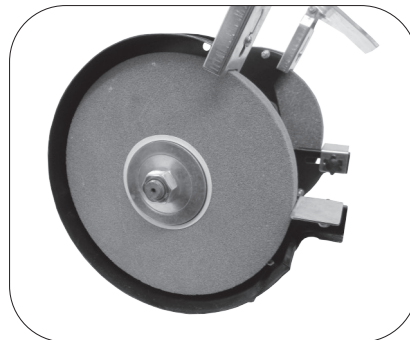
Warning! Always ensure that the replacement wheel is of the correct size and rated for the speed of the grinder as stated in the specifications.

Over time during normal usage the grinding wheels will become worn and need to be replaced.

- Remove the 3 screws that hold the side cover on (below, left).
- Remove the cover (below, right).

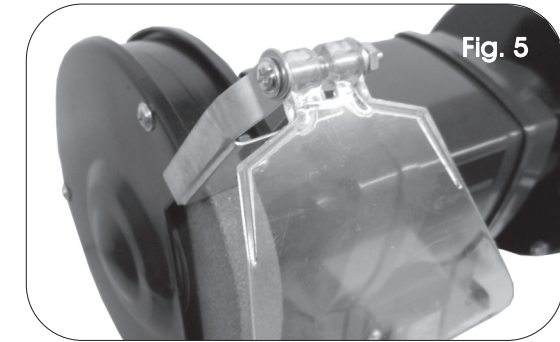
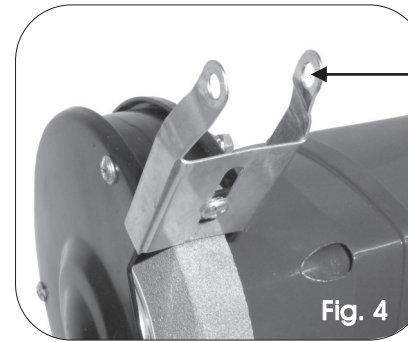


16



ASSEMBLY INSTRUCTIONS...cont

Once the spark arrestor is fitted and secure you can proceed to fit the eye shield. The eye shield fits directly to the spark arrestor (Fig. 4).



Fit the eye shield between the 'arms' of the spark arrestor and secure in place using the screw, washers and nut (Fig. 5).

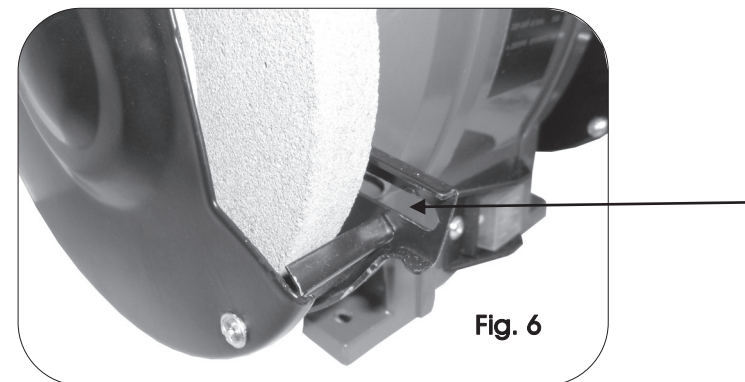


Note: Take care not to over tighten the screw as this will damage the eye shield; It only needs to be tight enough to hold the eye shield in place whilst allowing the operator to easily change the angle.

Follow these instructions to fit the other eye shield to the opposite side (07546 & 07557 only).

FITTING THE TOOL REST

The tool rest fits directly to the front of the guard (Fig. 6).



13

ASSEMBLY INSTRUCTIONS...cont

Slide the bolt through the slot on the guard (Fig. 7).
Slide the tool-rest over the bolt (Fig. 8).
Secure in place with the thumb-screw (Fig. 9).

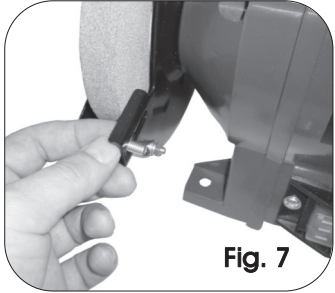


Fig. 7

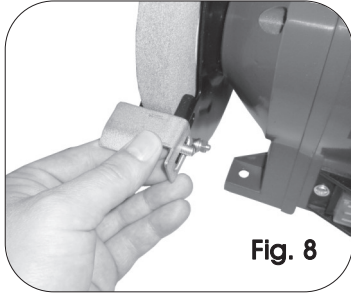


Fig. 8

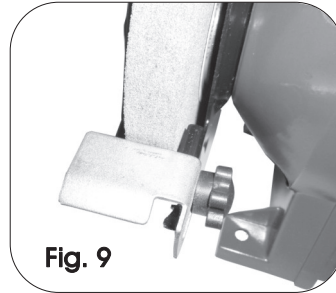


Fig. 9

Note: As with spark arrestor, the tool-rest should be set close to the grinding wheel, without touching; turn the wheel by hand to ensure there is no contact.

Follow these instructions to fit the other tool-rest to the opposite side (07546 & 07557 only).

OPERATING INSTRUCTIONS

Note: Before each operation; Turn the grinding wheel by hand to ensure that the wheel turns freely without catching the tool rest etc.

Danger / Caution: Always ensure that the wheel retaining nut is fully tightened and the wheel is secure before each operation.

Correct working practice:

Maintain a steady, moderate pressure on the work piece and keep it moving at an even pace for smooth grinding.

Pressing too hard overheats the motor and prematurely wears down the grinding wheels. The grinding wheel should rotate into the object, being sharpened. Keep a tray filled with water and dip your work into it regularly to prevent overheating.

Do not use the side of the grinding wheel; This puts dangerous stress on the wheel. When the wheel becomes loaded or 'dull', use an approved grinding wheel dresser and dress the wheel face.

OPERATING INSTRUCTIONS...cont



Warning! Always ensure that the grinder is bolted down onto a secure surface prior to operation.

SWITCHING THE GRINDER ON/OFF

The switch is located on the front of the grinder near the bottom. To turn the grinder on, depress the rocker switch on the right hand side (I), to turn the tool off, depress the left hand side of the rocker switch (O).



Note: Before starting the grinder, turn the wheels by hand making sure they are clear of obstructions and that they turn freely. The tool rests and eye shields should not touch the wheel.



Note: Turn on the grinder and allow it to reach full running speed before starting to grind.

GRINDING WITH THE WET STONE

- Fill the water carrier with clean water to just below the lower fill level (see below).
- Operate the On/Off switch as described above.
- Once the job is complete; use the drain bung (below) to release the water from the carrier - **Never** leave the water in the carrier for an extended period.

