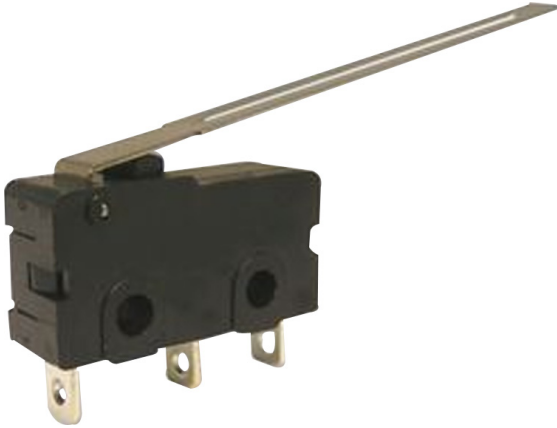


Microswitch

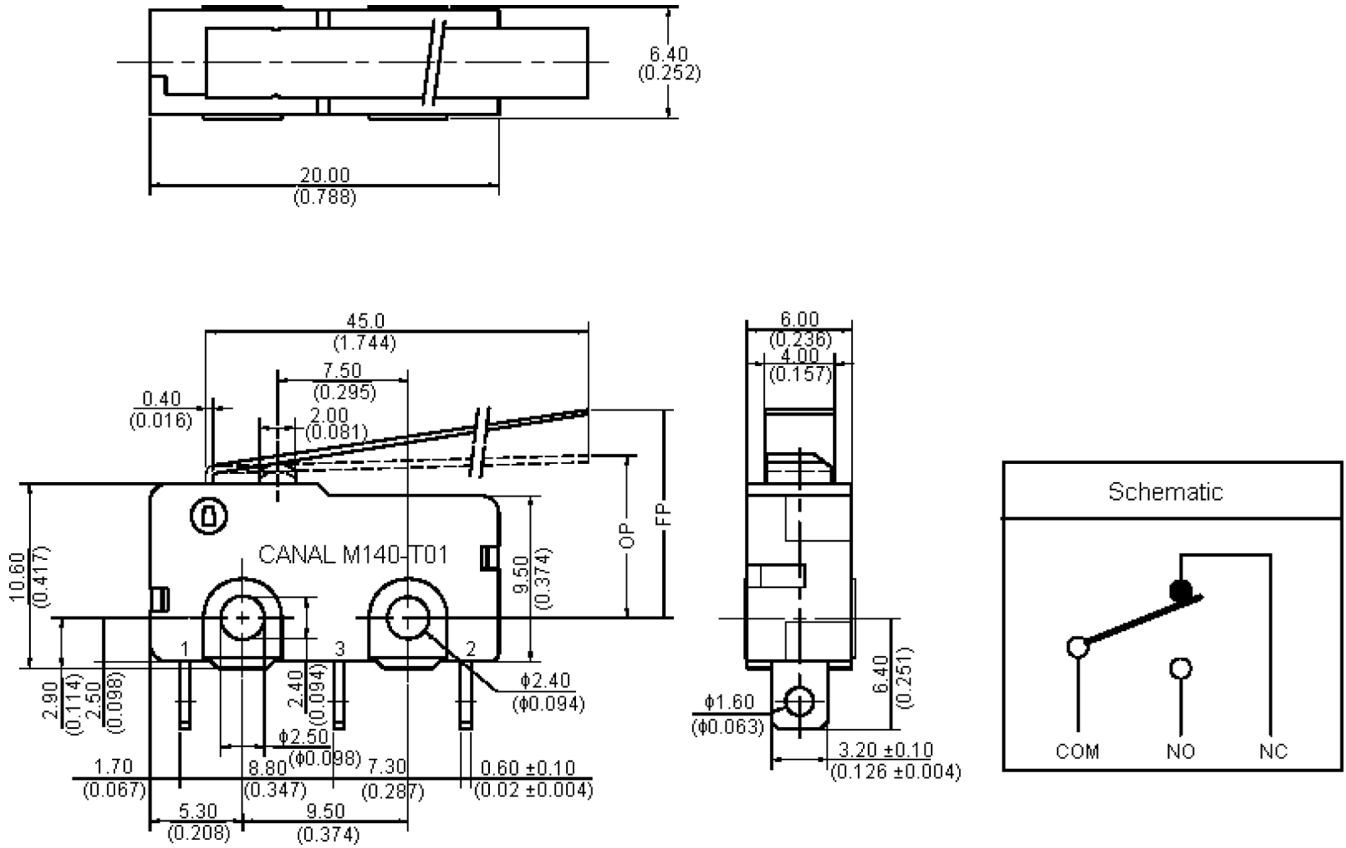
SPDT, Long Lever



Specifications:

Rating	: 5A, 125/250V AC : 5(2)A, 125/250V AC (NEMKO/ENEC/CQC) : 40T125 μ 5E4
Maximum Contact Resistance	: 500M Ω
Insulation Resistance	: >100M Ω 500V DC
Withstand Voltage	: 1,000V AC for 1 minute
Operating Frequency	: Mechanical 60 operations/minute : Electrical 6 to 12 operation/minute
Ambient Temperature	: -25°C to +85°C
Ambient Humidity	: \leq 85%RH
Mechanical Life	: 1,000,000 cycles
Electrical Life (at rate load)	: 50,000 cycles
Contact Configuration	: SPDT
Microswitch Type	: Snap Action
Actuator Style	: Long Lever
Switch Operation	: Off-On
Operating Force Max	: 45gf
Switch Terminals	: Solder
Contact Resistance	: 50m Ω
External Depth	: 6.4mm
External Width	: 19.8mm
Height	: 10.6mm
Operating Force	: 0.44N
Pre-travel	: 3.5mm
Series	: M140T01
Switch Case	: PBT (Polybutylene Terephthalate)

Microswitch SPDT, Long Lever



Note: Tolerances unless otherwise specified: $\pm 0.016/0.4$ inches/mm

Dimensions: Millimetres

Part Number Table

Description	Operating force (gf)					OP (mm)	Max. FP (mm)	Part number
	A	B	C	D	E			
Microswitch, SPDT, 5A, Long Lever	8	13	15	20	25	10.1 \pm 2	17.1	M140T01-AE0507A